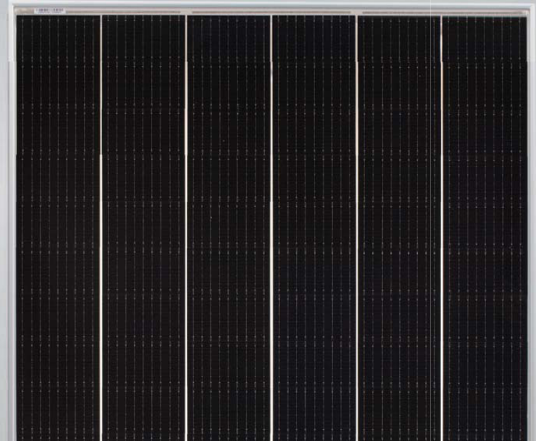


# Tiger Mono-facial 375-395 Watt

Tiling Ribbon (TR) Technology

Positive power tolerance of 0~+3%

N-Type



## KEY FEATURES



### TR technology + Half Cell

TR technology with Half cell aims to eliminate the cell gap to increase module efficiency (mono-facial up to 20.69%)



### Low Light Induced Degradation

The N-type cell shows extremely low light induced degradation (LID) performance when comparing with the P-type cell.



### 9BB instead of 5BB

9BB technology decreases the distance between bus bars and finger grid line which is benefit to power increase.



### Higher lifetime Power Yield

1% first year degradation,  
0.4% linear degradation



### Best Warranty

20 year product warranty,  
30 year linear power warranty



### Better low-light performance

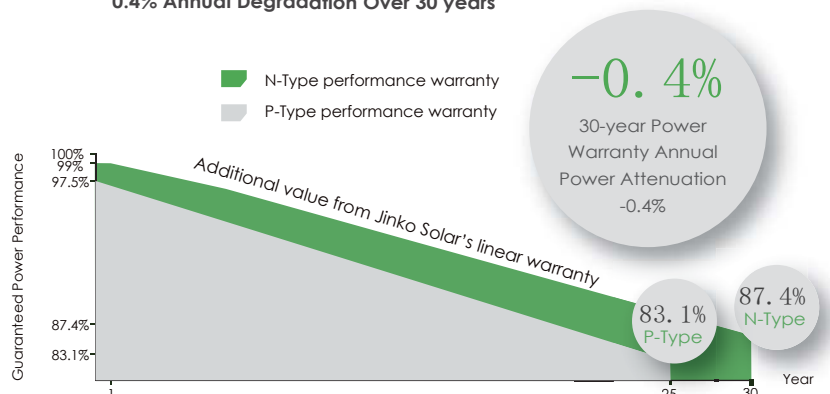
Excellent performance in low-light environments (e.g. early morning, dusk, and cloud, etc.)



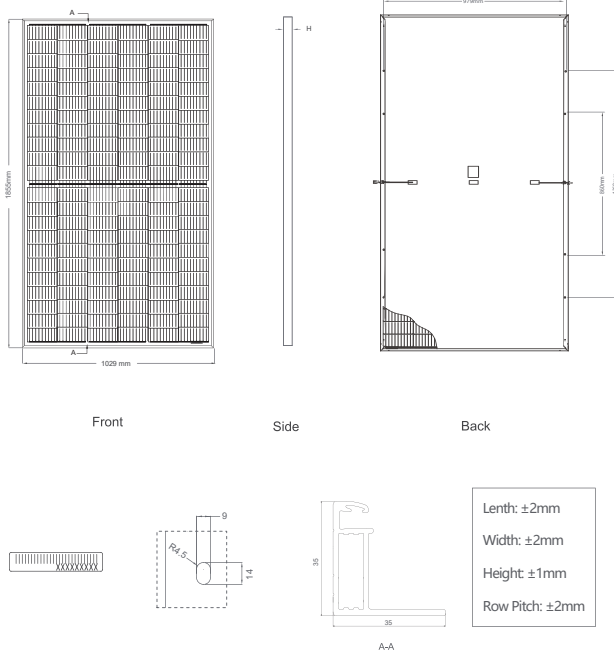
- ISO9001:2015, ISO14001:2015, ISO45001:2018 certified factory
- IEC61215, IEC61730 certified product

## LINEAR PERFORMANCE WARRANTY

20 Year Product Warranty 30 Year Linear Power Warranty  
0.4% Annual Degradation Over 30 years



## Engineering Drawings

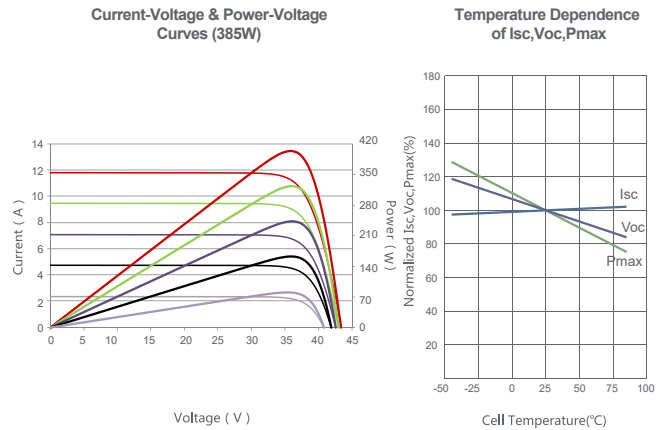


## Packaging Configuration

( Two pallets = One stack )

31pcs/pallets, 62pcs/stack, 744pcs/ 40'HQ Container

## Electrical Performance & Temperature Dependence



## Mechanical Characteristics

Cell Type	N type Mono-crystalline
No. of cells	132 (2×66)
Dimensions	1855×1029×35mm (73.03×40.51×1.37 inch)
Weight	22.1 kg (48.72 lbs)
Front Glass	3.2mm, Anti-Reflection Coating, High Transmission, Low Iron, Tempered Glass
Frame	Anodized Aluminium Alloy
Junction Box	IP67 Rated
Output Cables	TUV 1×4.0mm <sup>2</sup> (+) 800mm, (-) 800mm or Customized Length

## SPECIFICATIONS

Module Type	JKM375N-6RL3		JKM380N-6RL3		JKM385N-6RL3		JKM390N-6RL3		JKM395N-6RL3	
	JKM375N-6RL3-V	JKM375N-6RL3-V	JKM380N-6RL3-V	JKM380N-6RL3-V	JKM385N-6RL3-V	JKM385N-6RL3-V	JKM390N-6RL3-V	JKM390N-6RL3-V	JKM395N-6RL3-V	JKM395N-6RL3-V
	STC	NOCT	STC	NOCT	STC	NOCT	STC	NOCT	STC	NOCT
Maximum Power (Pmax)	375Wp	280Wp	380Wp	283Wp	385Wp	287Wp	390Wp	291Wp	395Wp	295Wp
Maximum Power Voltage (Vmp)	35.92V	33.05V	35.99V	33.18V	36.05V	33.26V	36.11V	33.39V	36.18V	33.51V
Maximum Power Current (Imp)	10.44A	8.46A	10.56A	8.54A	10.68A	8.63A	10.80A	8.71A	10.92A	8.79A
Open-circuit Voltage (Voc)	43.49V	41.05V	43.58V	41.13V	43.66V	41.21V	43.75V	41.29V	43.92V	41.45V
Short-circuit Current (Isc)	11.23A	9.07A	11.33A	9.15A	11.43A	9.23A	11.53A	9.31A	11.63A	9.39A
Module Efficiency STC (%)	19.65%		19.91%		20.17%		20.43%		20.69%	
Operating Temperature(°C)	-40°C~+85°C									
Maximum system voltage	1000/1500VDC (IEC)									
Maximum series fuse rating	20A									
Power tolerance	0~+3%									
Temperature coefficients of Pmax	-0.34%/°C									
Temperature coefficients of Voc	-0.28%/°C									
Temperature coefficients of Isc	0.048%/°C									
Nominal operating cell temperature (NOCT)	45±2°C									

\* STC: Irradiance 1000W/m<sup>2</sup> Cell Temperature 25°C

AM=1.5

NOCT: Irradiance 800W/m<sup>2</sup> Ambient Temperature 20°C

AM=1.5

Wind Speed 1m/s

\* Power measurement tolerance: ± 3%